



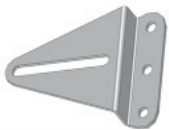
## Compatibility and Intended Use (互換性と用途)

Surly racks are compatible with bicycle forks that have threaded mounting points, and can accept bolts on mounts mid-blade and near the dropout that are already integrated into the frame design, or can safely accept rubber-coated clamps around the fork blades (additional hardware will be needed). Carbon fiber forks are not compatible with Surly Racks. Surly Racks are intended for recreational riding, not aggressive or stunt riding. Your Rack will haul up to 32kg (70 lb) of well-secured, well-balanced gear over roadways and maintained off-road trails. The rack capacity goes down as the road or trail gets rougher.

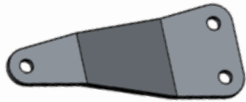
## Tools (必要工具)

4mm アーレンキー  
8mm オープンエンドレンチ  
グリス  
水準器 (任意)  
あまに油、フレームセイバー、ボアシールド、エンジン用噴射式オイル (任意ですが強くお勧めします)

## Hardware (ハードウェア)



(2) アッパーオフセット  
スライディングプレート



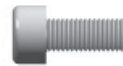
(2) ロワーオフセット  
スライディングプレート



(8) M5 ナylonインサート  
ロックナット



(20) M5 x 12mm(外径) stainless  
ステンレススチールフラットワッシャー



(12) M5 x 12mm

## Assembly Instructions (取り付け説明)

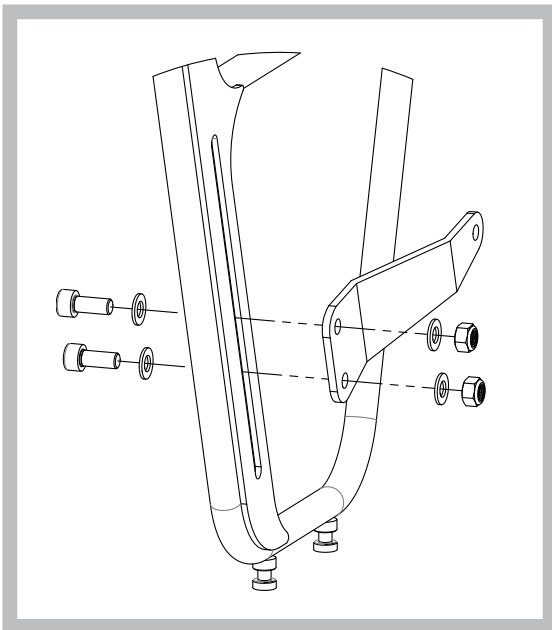
Read all of the instructions before assembling and installing your rack. If you are unsure of your ability to install your rack correctly, take it to your local bike shop mechanic for installation.

**△WARNING: Failure to install correctly or modifying your Surly Front Rack is NOT recommended, may void warranty, and result in your injury or death.**

Of course, you could botch the installation, get lucky, and simply experience a series of frustrating complications and delays leading to a less-than-enjoyable ride. When in doubt, take it to the shop.

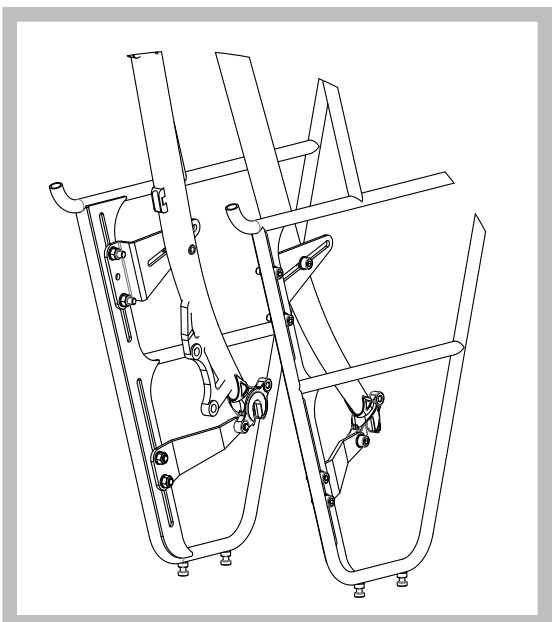
1. Find a clean space on a workbench or table for assembly. And, work in an area that gives you adequate room to move around your bike. A cluttered workspace will complicate the assembly and installation procedure.
2. Inventory hardware. Gather tools and supplies.
3. Optional—apply oil or Framesaver to the inside of the rack tubes (through the vent holes) to aid in corrosion prevention. For best results, allow time for the oil or Framesaver to soak in with the vertical holes covered and rotate occasionally.
4. Attach lower offset plates to the bottom of the rack. Hardware assembly sequence for attaching each plate, from outside to inside: 12mm cap screw, washer, rack, offset plate, washer, locking nut. See assembly references in Figure 1. Don't tighten the hardware, yet. It must be loose enough to allow the assembly to slide up and down.

**FIGURE 1**



5. It may be easiest to complete this step with the wheel removed and the bike resting upside-down on the floor or in a repair stand. Attach the offset plates to the fork using the 12mm cap screws. Apply grease to the 12mm bolts before installation. The cap screws should be snug, but loose enough to allow the rack to pivot. This allows you to level the rack before all the hardware is tightened. See Figure 2.

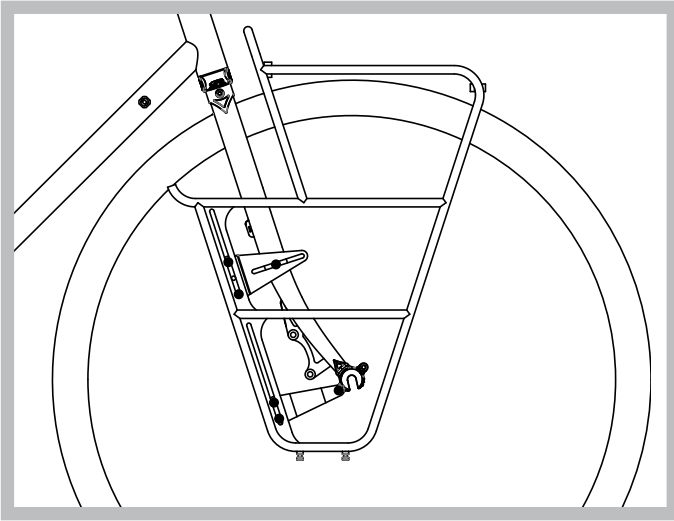
**FIGURE 2**



## Assembly Instructions (取り付け説明 つづき)

6. Install the wheel in the fork, rest the bike upright on a level floor, and adjust your rack up and down to attain your desired height. Be sure to allow clearance between the rack and tire, for debris accumulation and fender installation (if desired). Tighten the nuts of each lower offset plate to hold your rack's vertical position. Adjust the angle of your rack so its top surface is parallel to the floor. See Figure 3.

**FIGURE 3**



7. Attach upper sliding plates to the rack. The hardware assembly sequence is as follows, from outside to inside: 12mm cap screw, washer, rack, sliding plate, washer, locking nut.
8. Use a 12mm cap screw to loosely attach each sliding plate to the mid-blade eyelet. Level the rack. Tighten the sliding plate hardware. Tighten the 12mm sliding plate-to-eyelet. Tighten the lower sliding plate-to-fork eyelet bolt. Check all of the hardware once more. Tighten if necessary. Final assemblies should look similar to Figures 4. Your rack should be level and centered on the fork and the wheel, assuming it's dished properly. If not, you'll need to loosen the appropriate hardware and move the rack around until proper adjustments are made.

**FIGURE 4**



## Ongoing Maintenance (使用中のお手入れ)

Your new rack requires little maintenance. Check the tightness of the hardware once in a while. And, spray a little oil inside the tubes on occasion, if you're prone to riding in wet conditions.

## Limited Warranty (制限保証)

This SURLY product is warranted against defects in materials and workmanship for one year from the date of retail purchase of the product, subject to the limitations detailed below. Save your dated receipt for proof of purchase.

This warranty does NOT cover the following:

- Damage due to improper assembly or follow-up maintenance or lack of skill, competence or experience of the user or assembler
- Products that have been modified, neglected, used in competition or for commercial purposes, misused or abused, involved in accidents or anything other than normal use
- Installation of components, parts or accessories not originally intended for or compatible with bicycle as sold
- Damage or deterioration to the paint, surface finish, aesthetics or appearance of the product
- Normal wear and tear
- Labor required to remove and/or refit and re-adjust the product within the bicycle assembly

This limited warranty is expressly limited to the repair or replacement of a defective product, at the option of SURLY, and is the sole remedy of the warranty. This limited warranty applies only to the original purchaser of the SURLY product and is not transferable. This warranty applies only to products purchased through an authorized dealer or distributor. In no event shall SURLY be liable for any loss, inconvenience or damage, whether direct, incidental, consequential, or otherwise resulting from breach of any express or implied warranty or condition, of merchantability, fitness for a particular purpose, or otherwise with respect to our products except as set forth herein.

This limited warranty gives the consumer specific legal rights, and those rights and other rights may vary from place to place. This limited warranty does not affect your statutory rights.

TO THE EXTENT NOT PROHIBITED BY LAW, THESE WARRANTIES ARE EXCLUSIVE AND THERE ARE NO OTHER EXPRESS OR IMPLIED WARRANTIES OR CONDITIONS INCLUDING WARRANTIES OR CONDITIONS OF MERCHANTABILITY AND FITNESS FOR A PARTICULAR PURPOSE.

### Surly

6400 West 105th Street  
Bloomington, MN 55438

**The Watts Line:** 877.743.3191

**The Email:** derby@surlybikes.com

**The Web Address:** www.surlybikes.com