



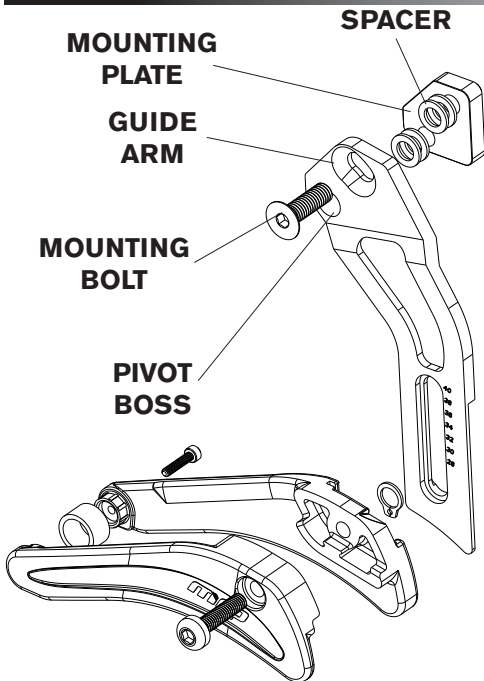
IMPORTANT CONSUMER SAFETY INFORMATION

WARNING: RIDING A BIKE IS DANGEROUS. NOT PROPERLY MAINTAINING OR INSPECTING YOUR BIKE AND ITS COMPONENTS IS EVEN MORE DANGEROUS. IT IS ALSO DANGEROUS TO NOT READ AND FOLLOW THESE INSTRUCTIONS.

1. DO NOT PERFORM ANY MODIFICATIONS OR ADJUSTMENTS THAT ARE NOT OUTLINED IN THIS MANUAL.
2. INSPECT YOUR CHAIN GUIDE BEFORE EVERY RIDE. INSPECT AREAS FOR ANY SIGNS OF EXCESSIVE RUBBING, BENDING, CRACKING OR OTHER DAMAGE. IF YOU NOTICE ANYTHING ABNORMAL, DO NOT RIDE IT. RETURN IT TO YOUR DEALER OR CONTACT MRP FOR A COMPLETE INSPECTION AND NECESSARY REPAIR.
3. MRP RECOMMENDS THAT YOU WEAR PROPER SAFETY EQUIPMENT EVERY TIME YOU RIDE, INCLUDING APPROVED BICYCLE HELMET. NEVER RIDE AT NIGHT WITHOUT LIGHTS.
4. ALWAYS USE GENUINE MRP PARTS. USE OF AFTERMARKET REPLACEMENT PARTS AND UPGRADES VOIDS THE WARRANTY AND COULD CAUSE STRUCTURAL FAILURE.

MRP HIGHLY RECOMMENDS THAT YOU HAVE YOUR NEW GUIDE INSTALLED BY A PROFESSIONAL MECHANIC AT YOUR FAVORITE LOCAL BIKE SHOP. IF YOU HAVE ANY DOUBTS ABOUT HOW TO INSTALL YOUR GUIDE, TAKE IT TO A BIKE SHOP. YOU'LL BE GLAD YOU DID.

1



COMPATIBILITY

The D-Mount 1x guide is compatible with most single-ring specific and three-ring cranks (with outer and inner ring removed) and can accommodate a 49-51mm chainline on standard mountain bikes and 62.5-64.5mm chainline on most "fat" bikes. Used in a single-ring application, two-ring "double" cranks may produce a wide chainline incompatible with the D-Mount 1x. There are several "offset" chainrings on the market that can fix this incompatibility.

The D-Mount 1x guide includes four 1mm spacers that can be installed on the mounting bolt and pivot boss between the mounting plate and guide arm.



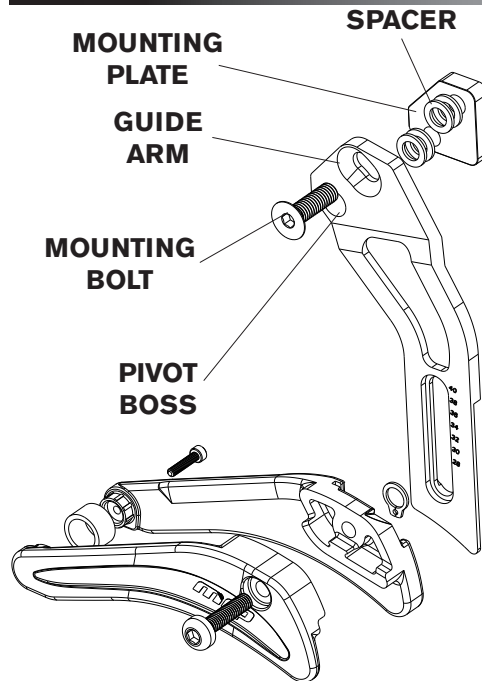
IMPORTANT CONSUMER SAFETY INFORMATION

WARNING: RIDING A BIKE IS DANGEROUS. NOT PROPERLY MAINTAINING OR INSPECTING YOUR BIKE AND ITS COMPONENTS IS EVEN MORE DANGEROUS. IT IS ALSO DANGEROUS TO NOT READ AND FOLLOW THESE INSTRUCTIONS.

1. DO NOT PERFORM ANY MODIFICATIONS OR ADJUSTMENTS THAT ARE NOT OUTLINED IN THIS MANUAL.
2. INSPECT YOUR CHAIN GUIDE BEFORE EVERY RIDE. INSPECT AREAS FOR ANY SIGNS OF EXCESSIVE RUBBING, BENDING, CRACKING OR OTHER DAMAGE. IF YOU NOTICE ANYTHING ABNORMAL, DO NOT RIDE IT. RETURN IT TO YOUR DEALER OR CONTACT MRP FOR A COMPLETE INSPECTION AND NECESSARY REPAIR.
3. MRP RECOMMENDS THAT YOU WEAR PROPER SAFETY EQUIPMENT EVERY TIME YOU RIDE, INCLUDING APPROVED BICYCLE HELMET. NEVER RIDE AT NIGHT WITHOUT LIGHTS.
4. ALWAYS USE GENUINE MRP PARTS. USE OF AFTERMARKET REPLACEMENT PARTS AND UPGRADES VOIDS THE WARRANTY AND COULD CAUSE STRUCTURAL FAILURE.

MRP HIGHLY RECOMMENDS THAT YOU HAVE YOUR NEW GUIDE INSTALLED BY A PROFESSIONAL MECHANIC AT YOUR FAVORITE LOCAL BIKE SHOP. IF YOU HAVE ANY DOUBTS ABOUT HOW TO INSTALL YOUR GUIDE, TAKE IT TO A BIKE SHOP. YOU'LL BE GLAD YOU DID.

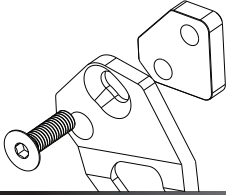
1



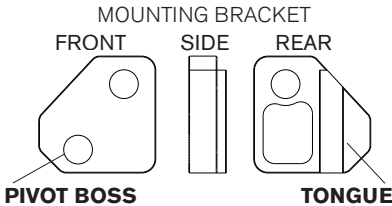
COMPATIBILITY

The D-Mount 1x guide is compatible with most single-ring specific and three-ring cranks (with outer and inner ring removed) and can accommodate a 49-51mm chainline on standard mountain bikes and 62.5-64.5mm chainline on most "fat" bikes. Used in a single-ring application, two-ring "double" cranks may produce a wide chainline incompatible with the D-Mount 1x. There are several "offset" chainrings on the market that can fix this incompatibility.

The D-Mount 1x guide includes four 1mm spacers that can be installed on the mounting bolt and pivot boss between the mounting plate and guide arm.

2

Bring the mounting plate and guide arm together, insert the mounting bolt through the kidney shaped track on the upper portion of the guide arm. The kidney shaped track allows for angular adjustment of the guide.

3

Locate the front derailleur mount on your frame and align the tongue and groove interface between it and the mounting plate. Thread the mounting bolt into the frame and tighten to 5-6 Nm.

4

Unthread the upper guide bolt from the captive slider nut, pull it halfway through the upper guide, and swing the upper guide open.

5

Install the crankset and chain. Close the upper guide and reinstall the upper guide bolt. Tighten the upper guide bolt to 1.2-1.3 Nm. The backplate features laser etching to assist in the vertical positioning of the guide. There should be roughly 3mm of space between the chain and the ceiling of the upper guide.

6

Check that the alignment of the guide is correct. The chain should be centered in the upper guide in the middle range of the cassette. There should be little or no contact between the chain and upper guide while in the smallest or largest cogs of the cassette. Refine this spacing using the included 1mm spacers if necessary.*

**This will require reversal of the installation steps thus far and restarting at step one.*

7

Check that all fasteners have been appropriately tightened and that there is no unwanted rubbing or contact anywhere in the assembly. Check the functionality of the of the guide in a safe environment.

FOR MORE INFORMATION PLEASE VISIT US ON THE WEB AT
MRPBIKE.COM
 OR CALL US AT (970)241-3518, WE'LL BE GLAD TO ASSIST YOU!